



# MASTER-TROL PLUS PACKAGE

## RETROFIT APPLICATIONS:

### 2 LAVATORIES & 2 TOILETS



Qty: 2



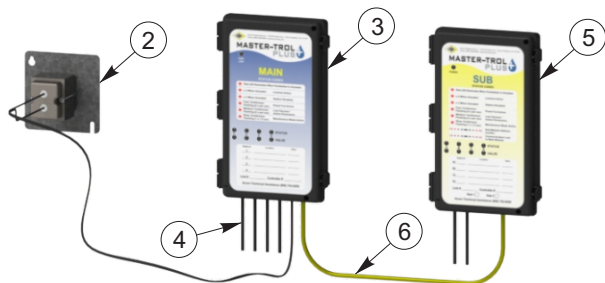
Qty: 2

### EZ-MTP PRE-PROGRAMMED SETTINGS:

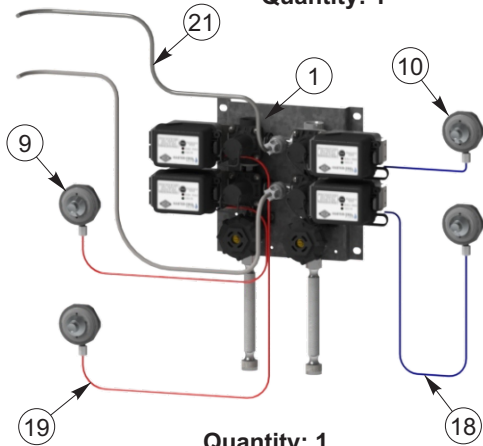
**LAVY:** WILL HAVE A 10-SECOND RUN TIME WITHOUT A LOCKOUT TIME PERIOD.

**TOILET:** WHEN FLUSHED 2 TIMES WITHIN A 5-MINUTE PERIOD, THE FLUSH VALVE WILL BE LOCKED OUT AND WILL BE UNABLE TO FLUSH FOR 15 MINUTES.

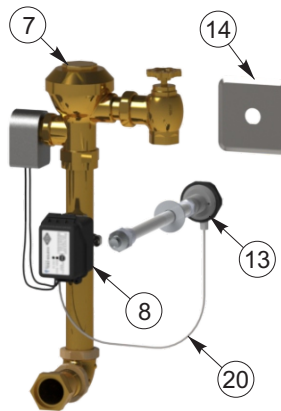
## ORDER SKU: EZ-MTP-WCL-2



Quantity: 1

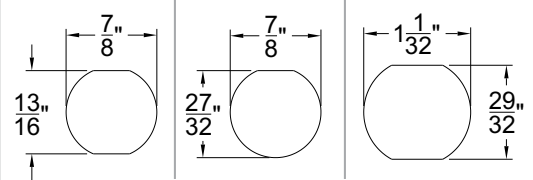


Quantity: 1

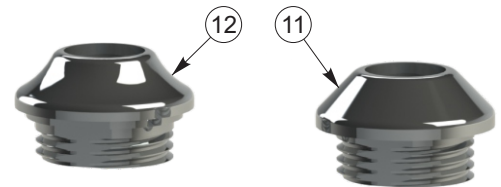


Quantity: 2

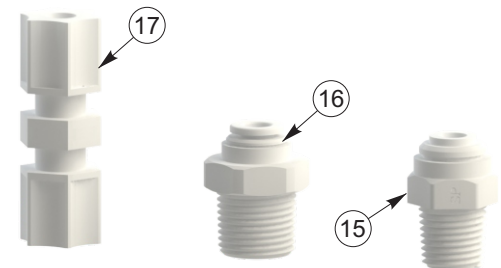
### PUSHBUTTONS WILL ACCOMMODATE:



### PUSHBUTTON ESCUTCHEONS:



### TUBING TO BUBBLER ADAPTERS:



ITEM #	COMPONENTS PROVIDED
1	-MTP2-MA2 H&C 0.5 GPM Valve Assembly (Pneumatic)
2	24VAC, 50 VA Transformer with 4" X 4" Mtg. Plate
3	MTP Main Controller
4	MTP Station Cable (CaT 5e) 15'
5	MTP Sub Controller
6	MTP Canbus Cable
7	Electronic Solenoid Operated Flush Valve, 1.28 GPF
8	-MTPFV Flush Valve Branch Box Assembly
9	Hot Pushbutton Assembly
10	Cold Pushbutton Assembly
11	7/8" Double "D" Punch Pushbutton Escutcheon

ITEM #	COMPONENTS PROVIDED
12	1-1/32" Double "D" Punch Pushbutton Escutcheon
13	Flush Valve Pushbutton Assembly
14	1-1/2" Pushbutton Escutcheon w/ 7/8" Double "D" Punch
15	1/4" O.D. Tube x 1/4" NPT Male Adapter
16	1/4" O.D. Tube x 3/8" NPT Male Adapter
17	1/4" O.D. Tube Union
18	1/8" Blue Tubing for Pneumatic Cold Activation, 10'
19	1/8" Red Tubing for Pneumatic Hot Activation, 10'
20	1/8" Clear Tubing for Pneumatic Flush Valve Activation, 10'
21	1/4" Clear Tubing from Valve Supply to -BP Penal Bubbler, 10'

Please visit [www.acorneng.com](http://www.acorneng.com) for most current specifications.

